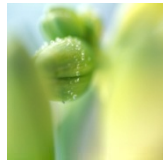
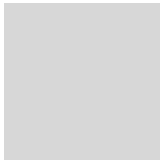
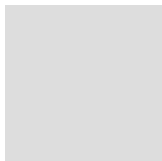




Welcome to



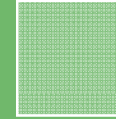
Mahidol Green



Campus



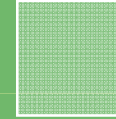
President's Policy Announced to the University Council in January 2008



- **“A Promised Place to Live and Learn with Nature”**
- Make Salaya Campus a rich “university” atmosphere to:
 - Produce a smart and responsible graduates
 - Be students’ second home
 - Offer learning environment in nature



The master plan 2008 includes development in 5 aspects:

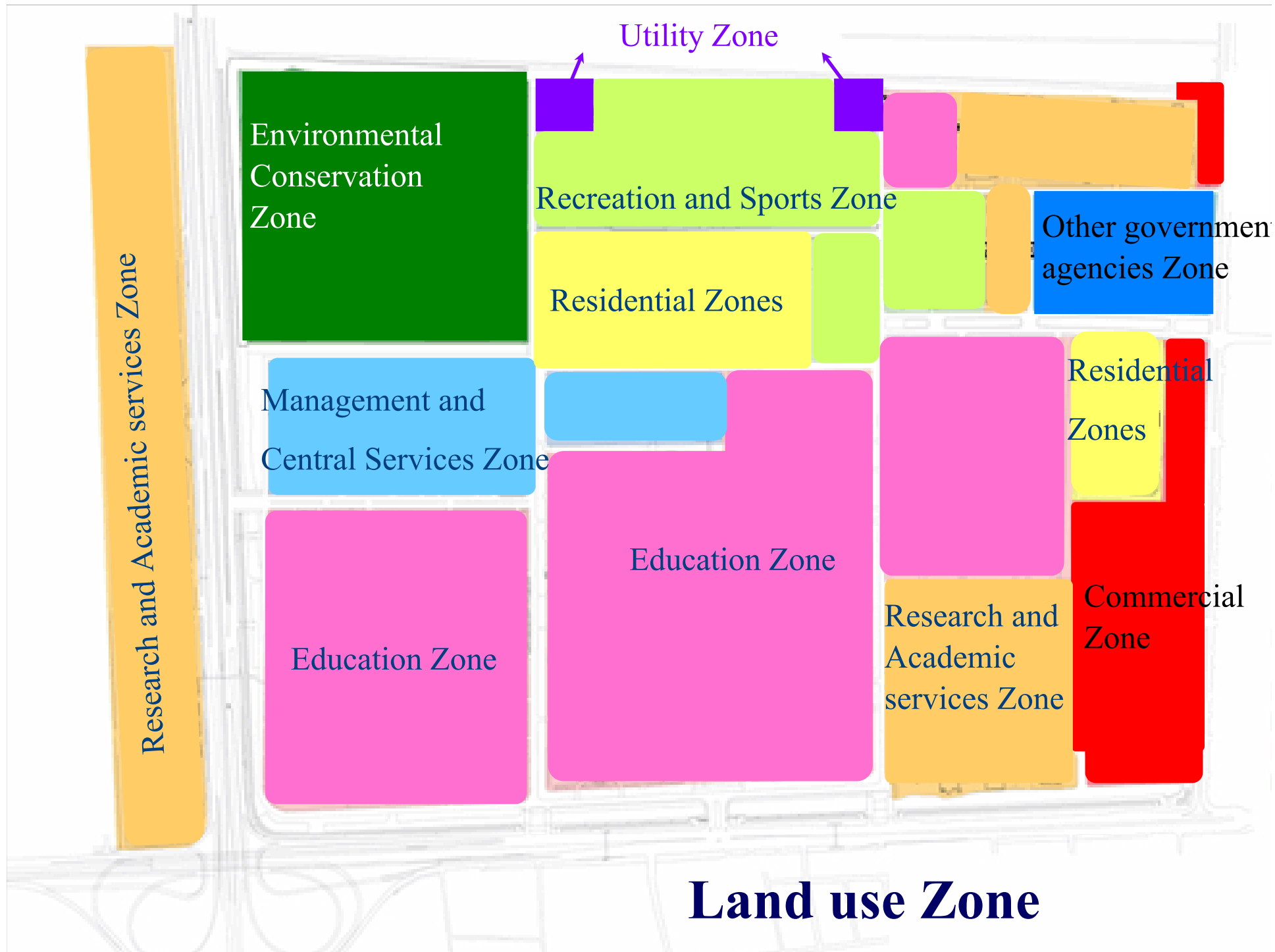


Land use development



- Arrange spaces for similar kinds of activities
- Control the density of land use --> at least 70% of overall area to be open spaces
- Using sub-block system for similar activity
- Specify significant green areas and open spaces





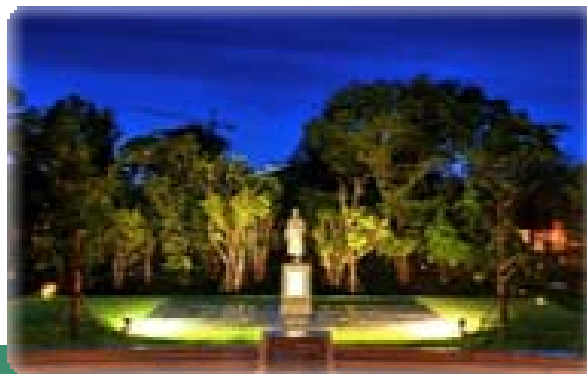
Landscape system development



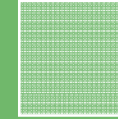
- A. University axis
- B. Vista, landmark and visual corridor
- C. Areas for activities
- D. Green network
- E. Areas for sports and recreations



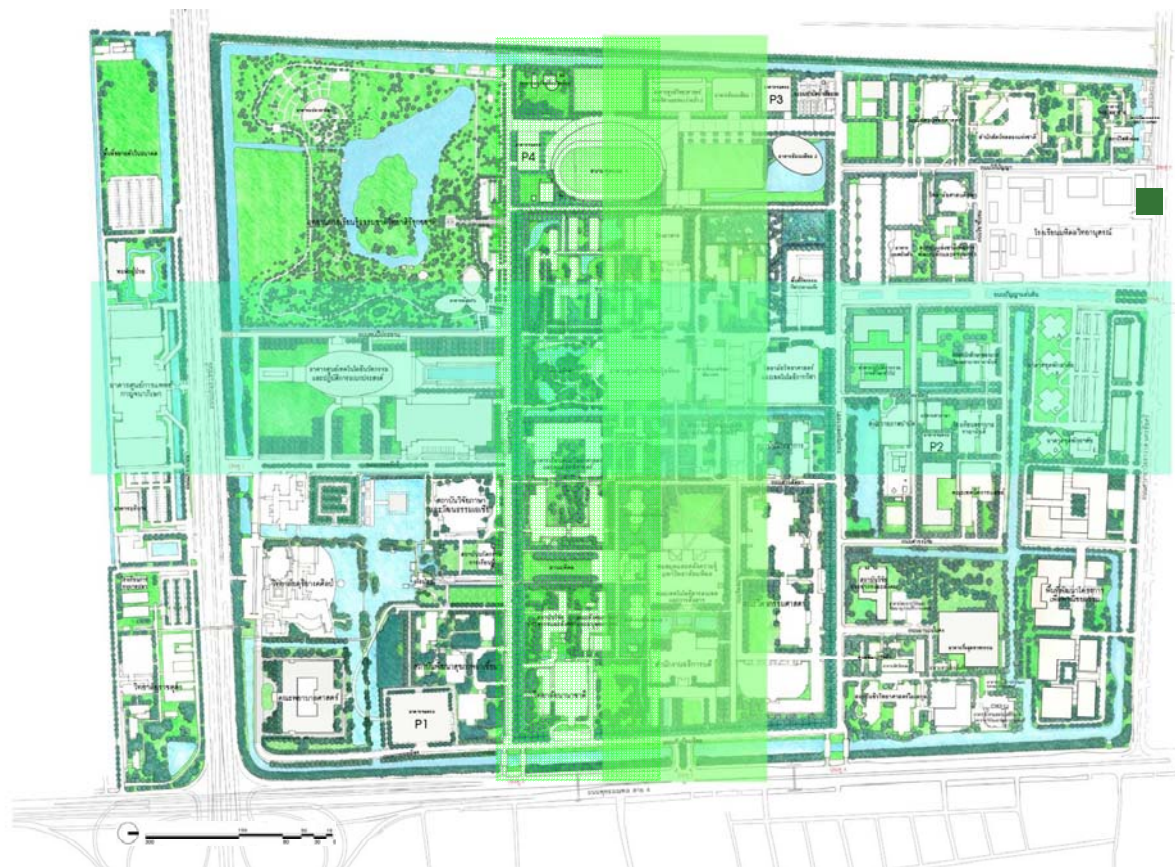
6



A. University Axis



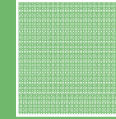
East-West green axis



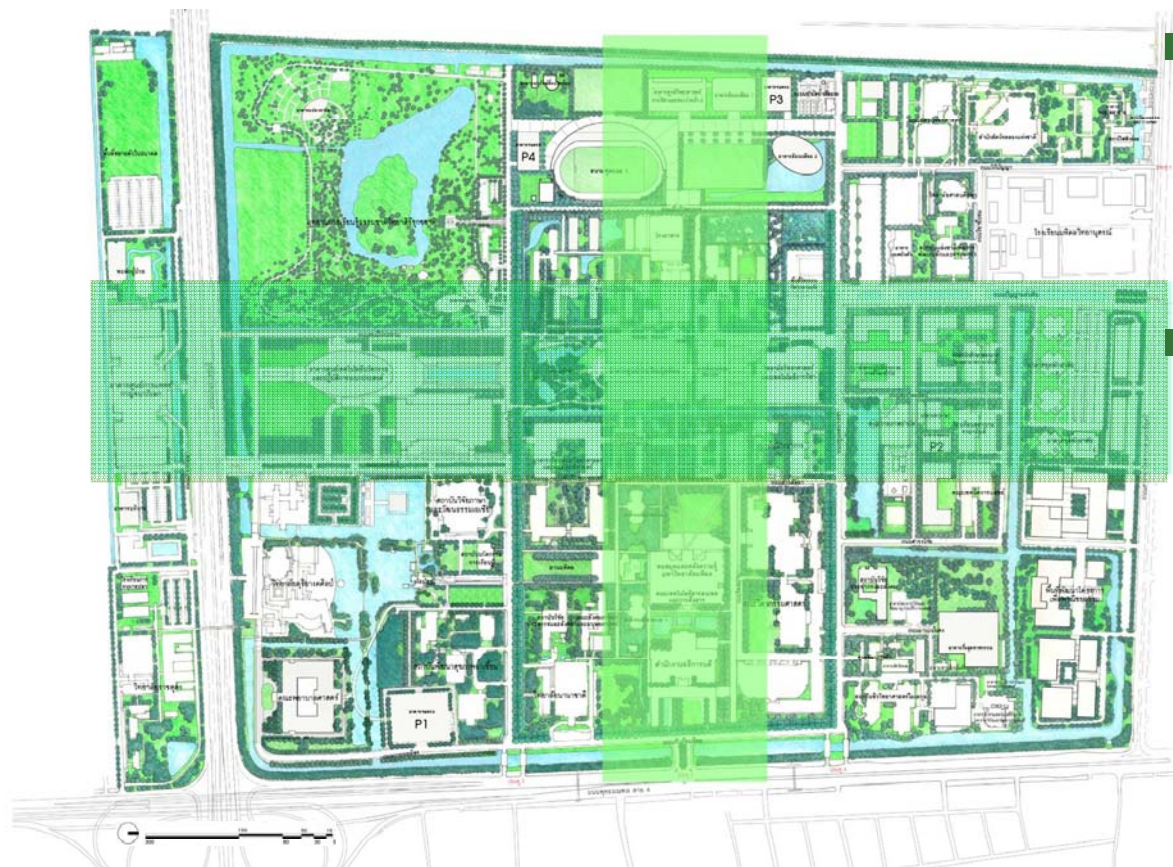
- The main pedestrian walkway and cycling path
- Connecting the University's Gate 3 to the street in front of campus dormitories and sport complex area



A. University Axis



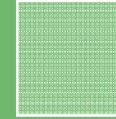
North-South green axis



- The main pedestrian walkway and cycling path
- Connecting the Boromratchonni Road to Salaya Thaiyawat-Nakornchaisri Road



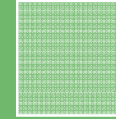
B. Vista, Landmark and Visual corridor



- To convey the University's attractive, remarkable and unique features
- Promote sense of direction with green and pleasant atmosphere



C. Areas for Activities



- Design outdoor spaces
 - To support different types of physical activities of MU members

Activity Courtyard



Walkways for activities



Service areas



D. Green Network



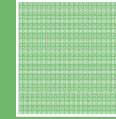
- --> Connect parks
- and public
- gardens to each
- other with the
- green circulation
- --> Walk-through
- gardens
- --> Larger green area



Green Circulation



E. Areas for Sports and Recreations

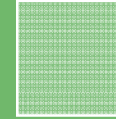


- Main areas for sports
- Exercise lawns
- Ponds for rowing
- Cycling lanes for relaxation and exercise



Achievement

Environment and Health



Organic farm

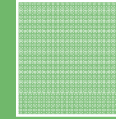


Garbage depot



Achievement

Environment and Health



Bio fertilizer

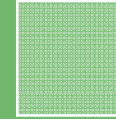


Organic fertilizer



Achievement

Environment and Health



Garbage bank



ธนาคารขยะรีไซเคิล
Recycle Waste Bank Book

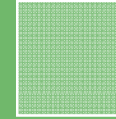
สมุดคู่มือ

ชื่อนักเรียน	
เลขที่นักเรียน	
คณะ/ชมรม/หน่วยงาน	

มูลนิธิเงินฝักขยะเพื่อการหมุนเวียนกลับมาใช้ใหม่



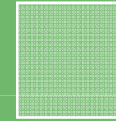
Traffic System Development



- Promote:
 - ★ The development of traffic and parking system
 - ★ Cycling lanes and pedestrian walkway system



Traffic System Development



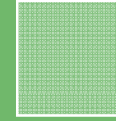
- University for motorized vehicles



University for walking
and cycling



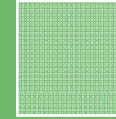
Traffic System Development



- * Control vehicle lanes for only new developed areas
- * Limit motorized vehicle use only outside academic zone
- * Keep inner pathways for cycling and walking



Traffic System Development

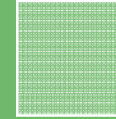


★ Construct and adjust the parking areas into green open spaces

★ Promote public transport use and facilitate the walkway and cycling path



Traffic System Development



A. Traffic and parking system

B. Cycling route system

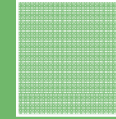
C. Cycling rack system

D. Pedestrian walkway system

E. On-campus public transportation system



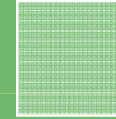
A. Traffic and Parking System



- Traffic system:
- 7 main routes (campus entrances connecting to different areas)
- 10 minor streets (main roads to buildings)
- Service routes and private streets
- Walking street and limited-hour service areas



A. Traffic and Parking System



- Parking areas and parking system:
- Develop shuttle service system
- Provides temporary parking areas



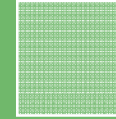


Cycling Map Mahidol Salaya Campus



- เส้นทางจักรยานรอบส่วนการศึกษา
- เส้นทางจักรยานรอบส่วนการศึกษาชั้นเหนือ
- เส้นทางจักรยานรอบร่วมกับถนน
- จุดจอดจักรยานโดยรอบ 1,032 คัน
- จิก้าเซ็นเตอร์
- ประตูทางเข้า-ออก
- จุดยืมจักรยาน
- จุดจอดจักรยานตามที่ต่างๆ 860 คัน
- สถานี่รกราง

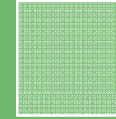
C. Cycling rack system



- ✦ Bicycle racks are provided at some
 - main buildings around the campus.
- ✦ The rack design and location must be
 - harmonious with the surrounding and
 - under shady areas.
- ✦ Lighting system must be prepared for night time parking.



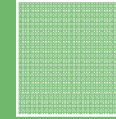
D. Pedestrian walkway system



- The construction design in
 - harmony with the
 - campus's landscape.
- The walkways must be easily
 - accessible and safe.



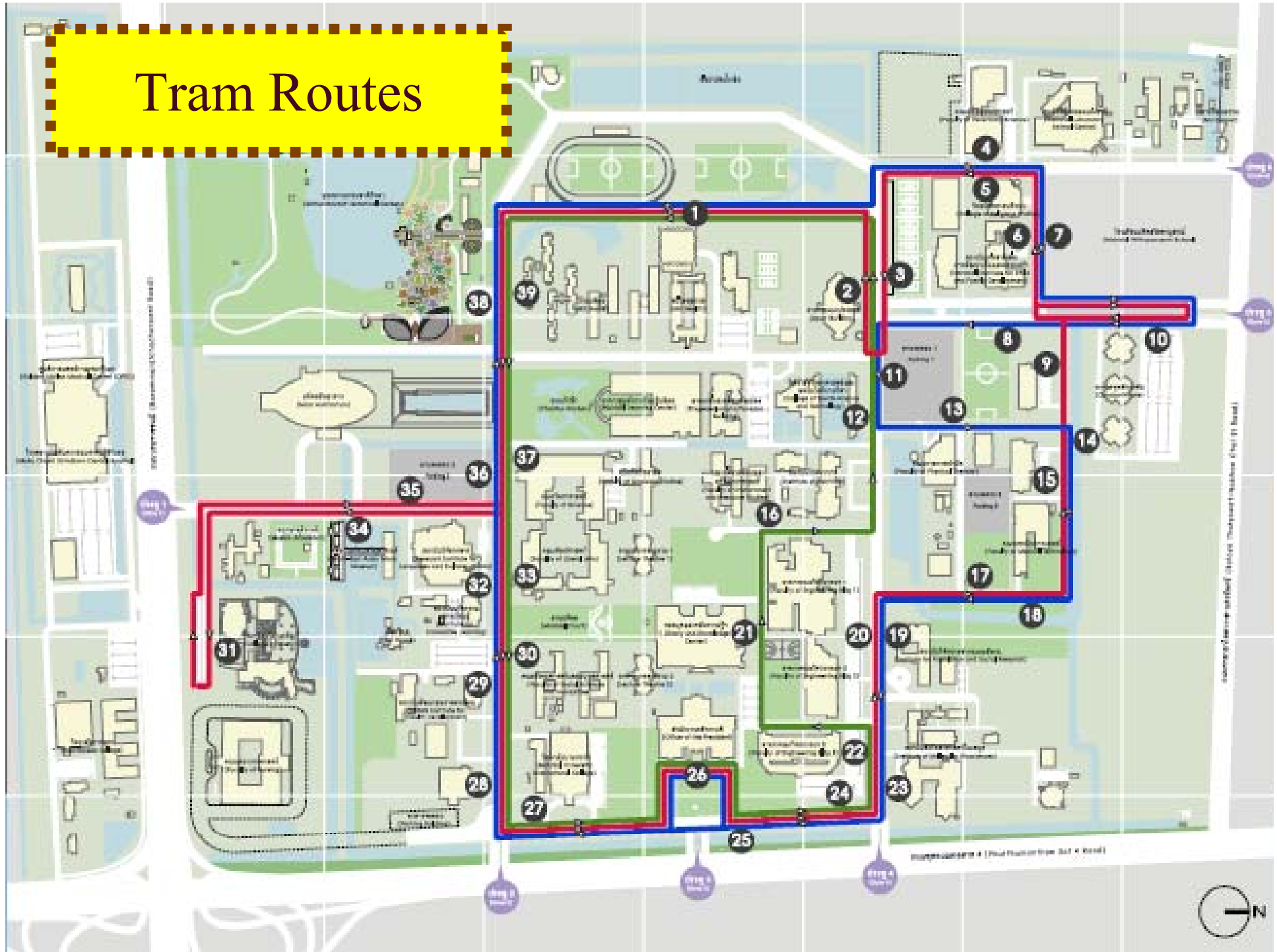
E. On-campus public transportation



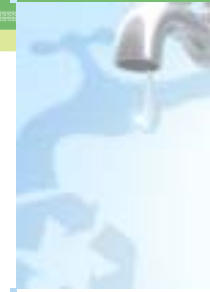
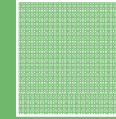
- The main purposes are
 1. To reduce the number of
 - cars used
 2. To promote walking and
 - cycling



Tram Routes



Infrastructure Service Development



- Including:

- ➔ Electric power system,

- ➔ Sanitation system,

- ➔ Service center

- ➔ Waste management system

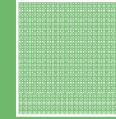
Energy saving

Environmental friendly

Reducing the use of resources

To be the model for other universities and the society

Building and Construction Control



- To support expansion of buildings in the future, regulations on design and establishment are imposed as following topics:

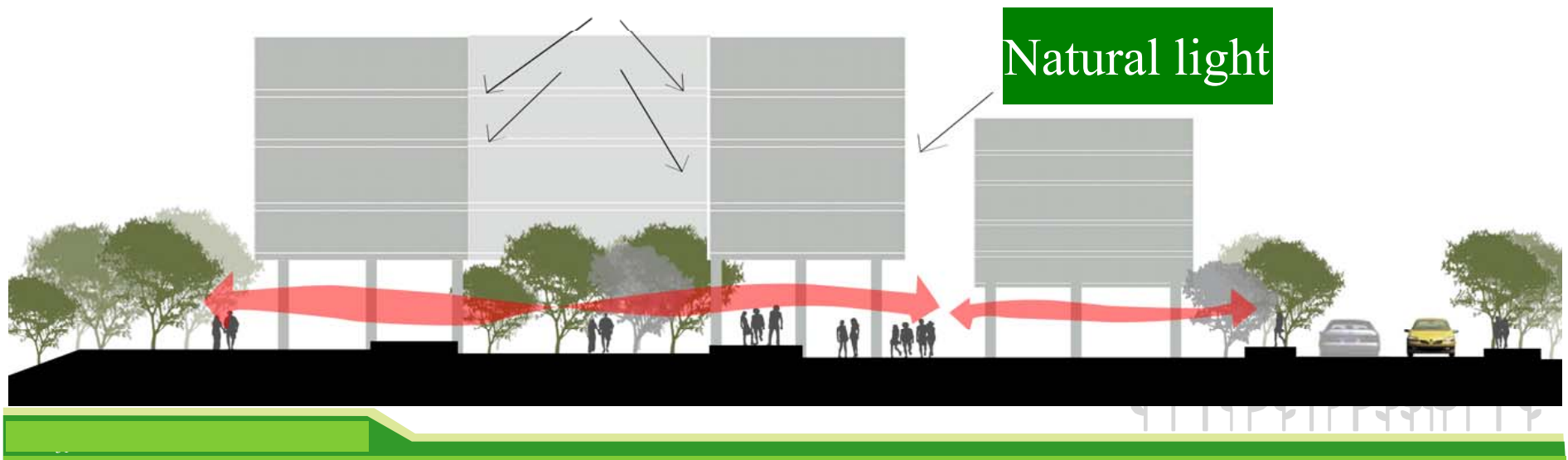
- Building layout
- Height of building
- Setback line

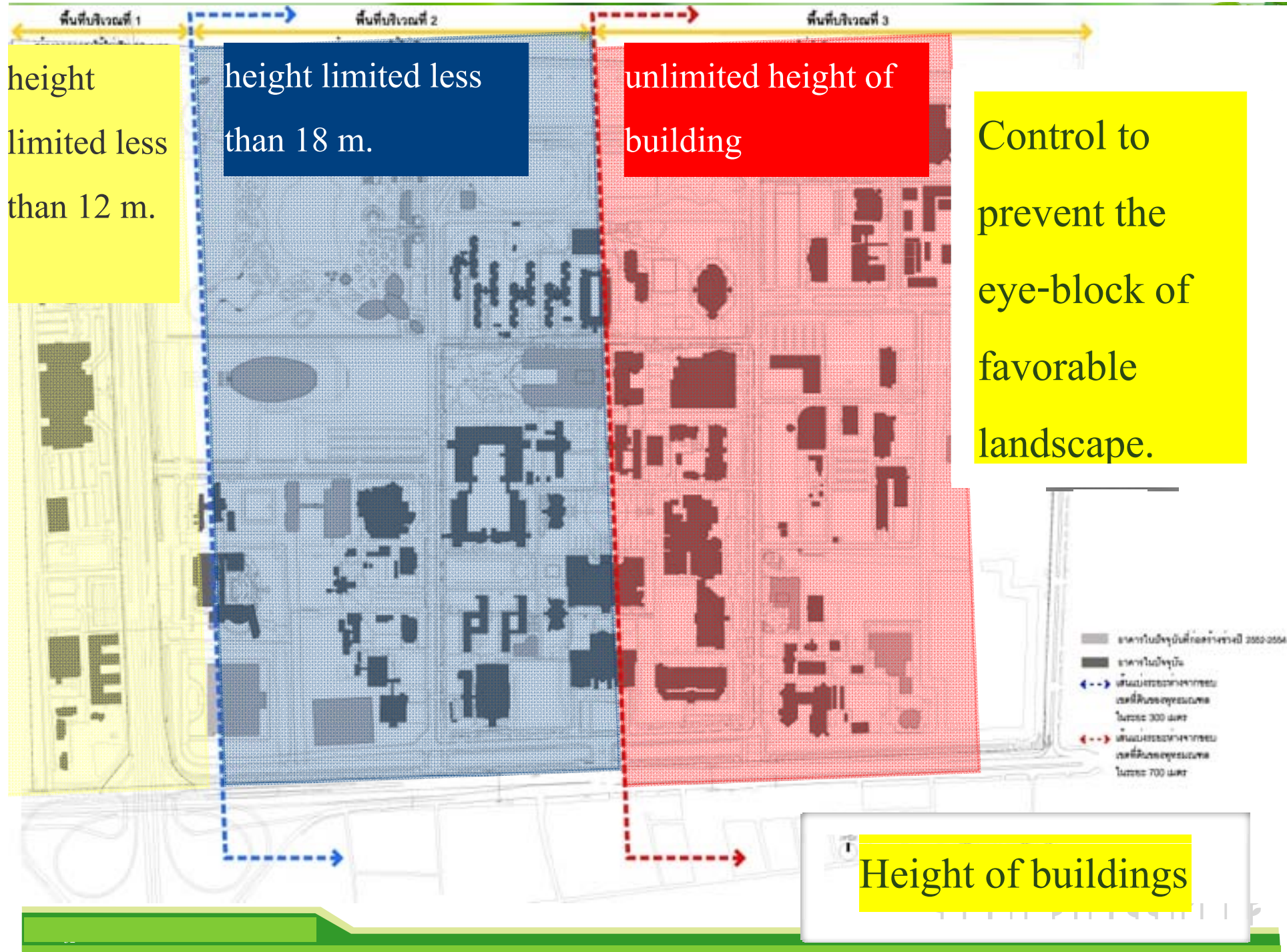


Building lay out

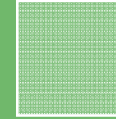


A guideline for suitable design, such as vista, and open areas which create the suitable atmosphere for learning and working.



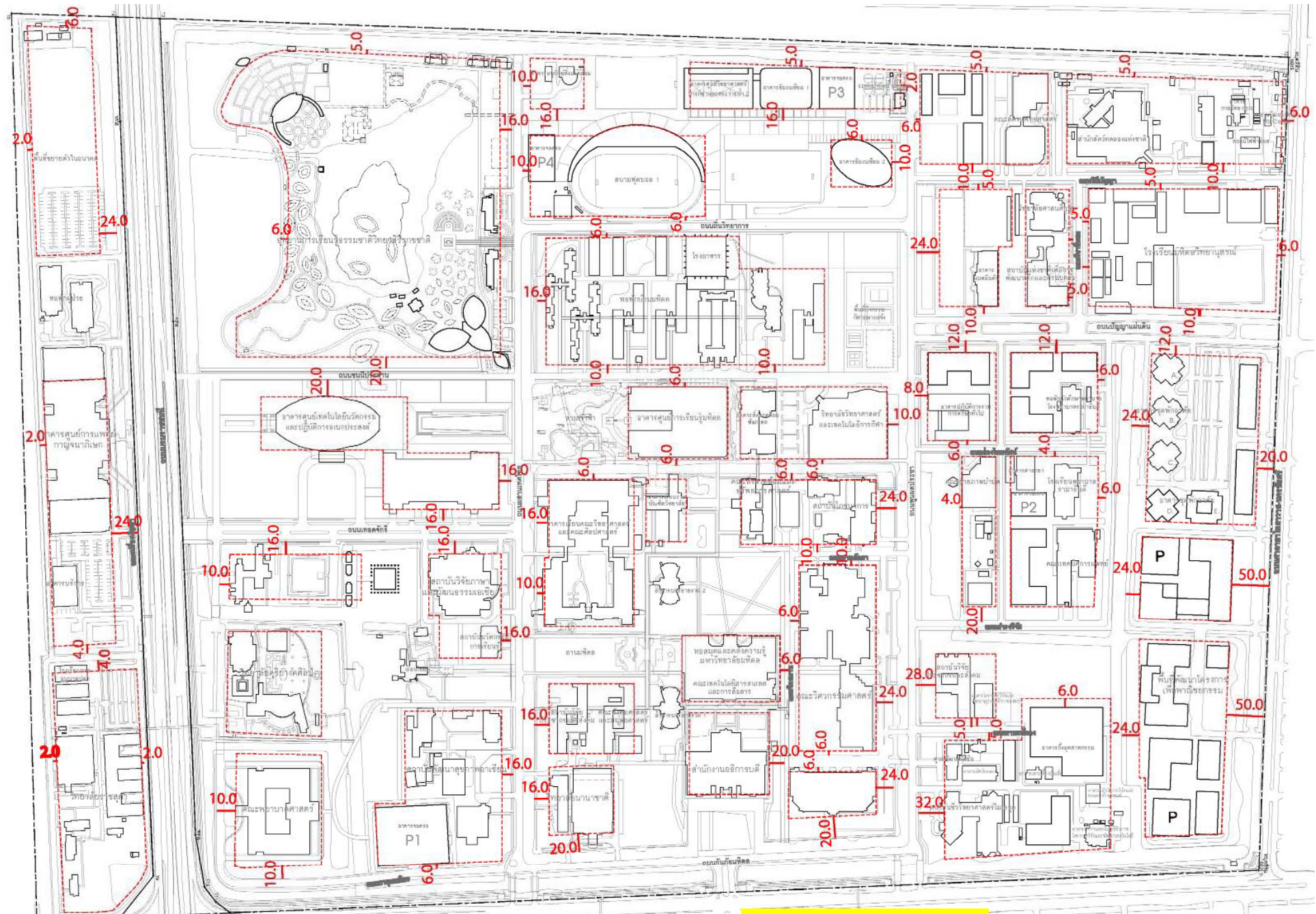


Setback line



- ⦿ To prevent the crowded of buildings.
- ⦿ Reserve some open areas, visual corridor and spaces for activities.

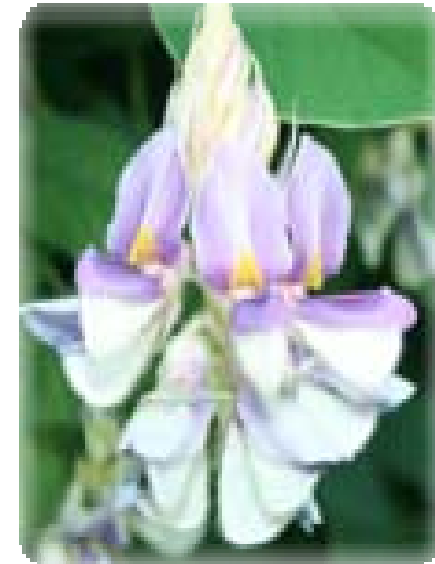
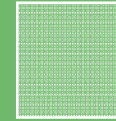




Setback line



See U Next Time



Thank you

